

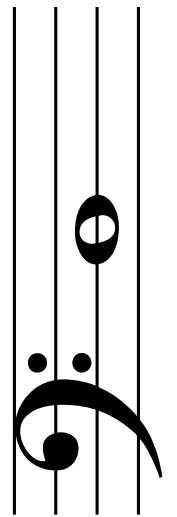
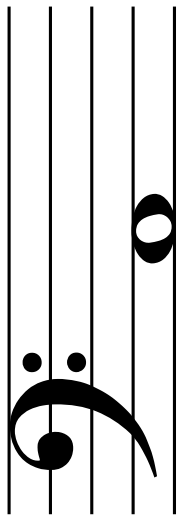
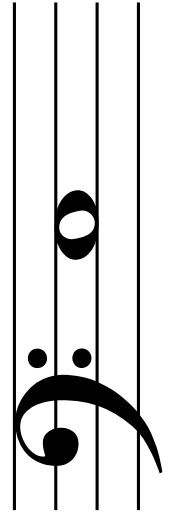
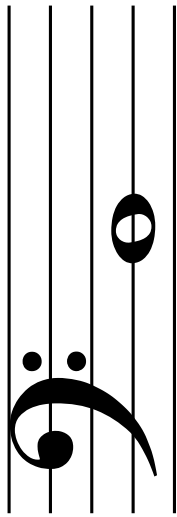
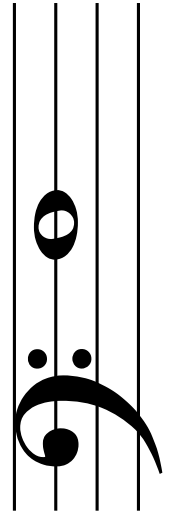
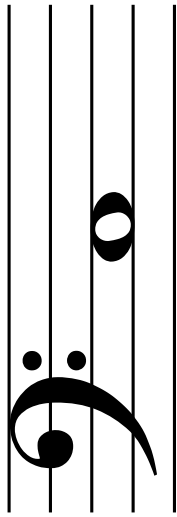
BASS CLEF
FLASH CARDS

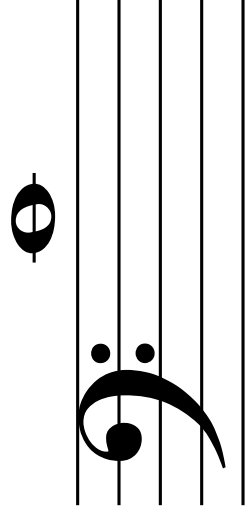
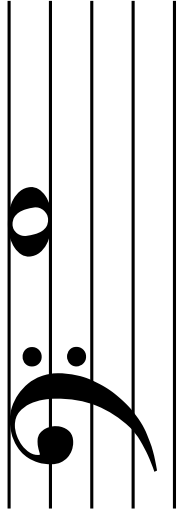
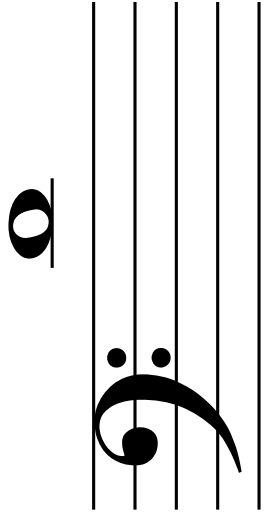
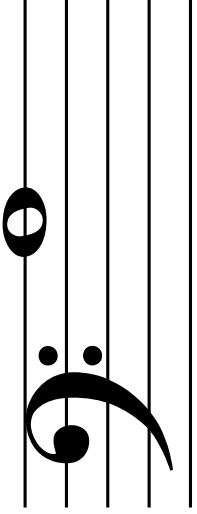
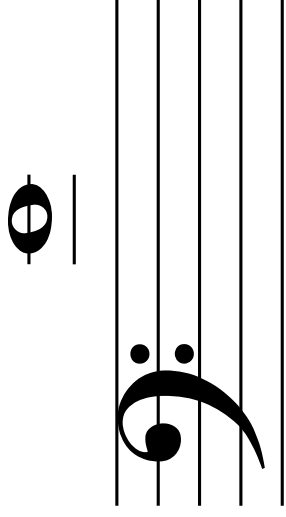
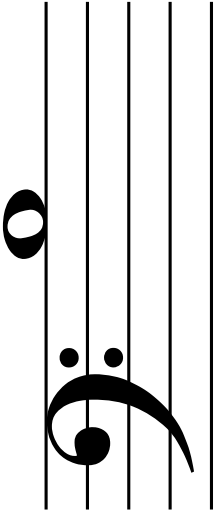


MakingMusicFun.net

Two rows of flash cards. Each row contains a card with a bass clef on a five-line staff and a corresponding note on a separate staff. The first row shows a note on the first line (F2), and the second row shows a note on the second line (G2).

Two rows of flash cards. Each row contains a card with a bass clef on a five-line staff and a corresponding note on a separate staff. The first row shows a note on the second space (A2), and the second row shows a note on the third space (B2).





ANSWER KEY

A musical staff with a bass clef. The staff contains 17 notes, each represented by a small circle with a vertical line through its center. The notes are positioned on the following lines and spaces from left to right: C (line 1), D (space 1), E (line 2), F (space 2), G (line 3), A (space 3), B (line 4), C (space 4), D (line 5), E (space 5), F (line 6), G (space 6), A (line 7), B (space 7), C (line 8), D (space 8), and E (line 9).

C D E F G A B C D E F G A B C D E



Product License

Unlimited copies for you. However, additional copies may not be distributed to friends or fellow teachers.

Freebies and Discounts

Follow MakingMusicFun.net on TeachersPayTeachers.com to stay updated on discounts and freebies. New products will be offered for free on occasion, or discounted 20% during the first 24 hours.

Comments, Ratings and Refunds

Comments and ratings are always appreciated! If you're not grinning from ear to ear about your purchase, we'd be glad to offer you a refund. Please email prior to leaving feedback on the site.

Thanks!

Andy Fling
MakingMusicFun.net